

Kearsarge Beekeepers Association

PRESIDENT’S MESSAGE

Hello,

As I write this, my rain gauge is showing 2 inches of newly fallen rain. Looks like it might be a good nectar flow when temperatures warm up and it gets sunny.

My garage has been transformed from winter car shelter to bee-keeping workshop. I’ve been building frames and getting my equipment ready for the impending swarm season. It seems to be a little early this year. Some of our local beekeepers are already seeing queen cells. Bees love to swarm right after a lousy stretch of weather. Hint, hint!

Last Saturday when temps were warmer I managed to inspect my hives. Some of them were well on their way to being nectar and pollen bound. I welcomed the cooler weather and rain to slow them down and give me a chance to prepare.

I usually try to put out a swarm trap. Past years, my hives have swarmed just as I was getting home from vacation. Even waiting till I’m standing in front of the hive to do an inspection! One year I came home to a large swarm in a small sapling. I shook them into the box and left them alone for 20 minutes. Came back, and they were back in the tree. This time, I looked and found a young queen running around and caged her. I shook the swarm into the hive again. I left them for 30 minutes and came out to find a smaller cluster of bees back in the tree! Upon further observation, I found and captured a second virgin queen.

As much as I hate to have my hives swarm, it is a wonder to watch them take to the air and manage to agree where to land! Shaking the cluster down and watching them march into the hive never gets old.

There are many videos on how to make swarm traps. Some people build boxes, others use modified buckets. The Russian Scion is an excellent and inexpensive trap to make and hang in your apiary to catch your own swarms. Experiment and have fun!



Continued page 3...



INSIDE THIS ISSUE

- April Meeting Notes2
- President’s Message cont.3
- Farm, Forest and Garden Expo3
- KBA Library.....3
- Beekeeping Activities for May4
- HOWs Reminder4
- Book Review5
- KBA Committees5
- Bees For Sale5
- KBA Dues Reminder5
- KBA Calendar6
- Thank you.....6
- T-shirt Update6
- Officer Information6

NEXT MEETING

MAY 13 , 2023
@ 9:00 AM

In person @
the **Warner Town Hall**

AGENDA TO INCLUDE:

- Minutes from the Previous Meeting*
- Treasurer’s Report*
- Old Business*
- New Business*

NOTE: June’s meeting will be at the club apiary with our State Bee Inspector Dave Priebe. There will be no business meeting. Notice and start time will be sent out.

APRIL 2023 KBA MEETING NOTES

The April KBA meeting was held at the Warner Town Library 9:15, April 8, 2023.

Attendance:

Shreve Soule, Diane Mancino, Betsey McNaughton, Kim Pease, Eric DeKiney, Susan Menard, Cathy Chestley, Denise Wilde, Liz Peterson, Myra Gray, Mike Howard, Amelia Lantz, Mike Punkett, Patrice Fredette, Robin Gray, Kevin Sargent, Joey Byrnes, Bob Deluca, Sue Deluca, and Marilyn Milne.

Meeting location for May will be the 2nd Saturday May 13. Shreve has reserved the Warner Town Hall, but if the library is easier, not needing to retrieve a key, that is possible. An email will go out to the members for the location.

The June Meeting will be the 2nd Saturday in June, June 10, at the Apiary in Sunapee. A HOWS will be conducted by Dave and Dorinda. Details to follow.

Treasurer's report: Robin Gray

Account Balance \$8087.00, no change from last month, paid members 63. This includes funds from the Bee School. Last year this time we had 80 paid members.

Committee Reports

Apiary Report: Randy Fleury (Bam)

All 4 production hives are alive, Only 1 Nucleus hive was alive when Bam went out to install candy boards. Starvation, most likely the cause. Make robbing screens for the hives.

We would like to try to raise queens again this summer. This year is the best overwintering we have had. We will be numbering the four hives. One will be single brood management, one alternative swarm method, one regular inspection, open for suggestion for the last hive to try. Bam installed a bee package as a HOWS demo on April 5. One member attended due to time. Queen release can not be delayed. He will be checking on the queen bee in the following days. We don't want or need any more hives. Just maintain the four production hives. The top bar hive is unpopulated at this time. We would like to be able to transfer the new package to the top bar hive.

Bam is organizing the apiary shed, taking inventory, adding shelving, labeling.

A work detail at the apiary will be announced. He has been candle making and showed us some samples. Hopefully we can have another HOWS on candle making.

HOWs Calendar: The next HOWS will be April 23, 10am at Tucker Mountain Farm, 303 Tucker Mountain Rd, Andover, NH. Topic: Electric Fencing. conducted by Kim Pease.

We need HOWS presenters. It's a good learning experience. It's casual, and fun!

Bee School Committee: John Chadwick

The committee met on March 11, Next committee meeting will be in June. This is for Bee School 2024. 30 registered for class, \$2,278 minus \$955 expenses.

Speaker Committee: Kim Pease and Susan Menard

Eric DeKing KBA member speaking today on Planting for Pollinators. Discussion on inviting other clubs and charging a fee, or free admission if they join our club.

- **May** - No speaker
- **June** - Dave and Dorinda will be conducting hive inspections
- **September** - Troy Hall KBA member "Coming Back from the Brink"
- **November 10** - at our harvest dinner and the following Saturday, Nov 11, Dr Zac Lamas.

Vocational Agriculture, Newport High School, FFA

Amelia Lantz reported that they would like nucs vs hives. Will the club donate the nucs? Or will someone donate from their hives? Motion to set aside \$600 for two nucleus colonies approved.

NH Farm, Forest and Garden Expo will be at the Deerfield Fairgrounds May 5-6. The NH Beekeepers Association has a booth and is looking for volunteers. We will be sending down 100 brochures. Contact Shane Howard for details.

Honey Trophy

Betsy is working on it for the harvest dinner.

Website

Joey Byrnes She has been updating the website, building out pages. Program help would be nice. Thank you for the updates!

Educational Committee Scholarship

Kim Bee School scholarship

Newsletter - Marilyn Milne

Wax Dipping - Mike Plunkett new equipment only about \$5 a box

Contact KBA if you are looking for a mentor.

Meeting Adjourned

T Shirt orders were taken during the break. Diane will submit the order and KBA will reimburse her for the order. An order deadline was emailed to the group. T Shirts will be purchased through KBA when they are received.

Eric DeKing, KBA member, gave a presentation on Planting for Pollinators.

... President's Message continued from Page 1.

Just a reminder, there is a large outbreak of American Foulbrood in central Mass. Be very careful if you are purchasing bees from an apiary in Massachusetts. All packages and nucs are supposed to come with a certification/inspection sticker from the Massachusetts State Bee Inspector. If you buy a package or nuc and there is no certification, do not buy the package or nuc. We all will need to be vigilant and ask a mentor or more experienced beekeeper if the brood does not look healthy or normal. White brood is healthy brood. Here is the website link if you have never seen it. Check it out and be prepared. [Apiaries and Beekeeping | Plant Industry | NH Department of Agriculture, Markets and Food](#)

A few weekends ago I had fun assisting one of our club members assemble deep hive bodies and getting to know him. Last year, I helped different members in their apiaries doing inspections and catching queens. It's a great way to get to know the members and help a fellow beekeeper out at the same time. Plus, I always learn something new. Give it a try! Support your local beekeeper!

Monthly meetings are the second Saturday of the month. Not only do we conduct bee club business but we try to have speakers a few times a year. We also stick around after the meetings and talk of all things, BEES! Meetings are a great time to chat with more experienced members and ask questions. We love talking bees! Don't forget the HOWS!!! Please join us. Hope to see you at the next meeting.

At your service,
Shreve Soule
President of KBA

Join the New Hampshire Beekeepers Association at this year's Farm, Forest and Garden Expo!

Consult Industry Experts • Running Machinery •
Barnyard Animals • Expanded Kid's Ag Discovery Zone
• 4-H & FFA Competitions • Free Workshops & more!



Bigger & Better!
Win a Farm Stay Get-a-way -
Details on Ticket Page
Deerfield Fairgrounds
Friday, May 5, 2023, 9am-7pm
Saturday, May 6, 2023, 9am-4pm

They are still looking for volunteers to man the NHBA booth at the Farm, Forest and Garden Expo on May 5th & 6th at Deerfield Fairgrounds. Contact Shane Howard for more information.

DEERFIELD FAIR

34 STAGE ROAD
DEERFIELD, NH 03037

Visit the KBA Library!

Don't forget that as a KBA member, you have access to the KBA Library. The Library is kept at the Apiary. Checking books in or out is easy!

Current books include:

- Following the Wild Bees, by Thomas D Seeley
- Selecting and Operating Beekeeping Equipment, USDA
- Beekeeping Basics, Penn State
- The Bee Hunter, by George Harold Edgell
- Elemental Genetics and Breeding for the Honey Bee, by Ernesto Guzman-Novoa
- Honey Bee Diseases and Pests, 3rd Edition, Canadian Association of Professional Apiculturists
- Ontario Beekeeping Manual, Ontario Beekeeper's Association
- Ontario Introductory Queen Rearing Manual, Ontario Beekeeper's Association
- IPM for Beekeeping in Ontario, Ontario Beekeeper's Association
- A Field Guide to Honey Bees and Their Maladies, Penn State Extension
- Identification and Control of Honey Bee Diseases, USDA
- The Beekeeper's Handbook, 4th Edition, Diana Sammataro and Alfonse Avitabile (Thank you Joey Byrnes for donating!)





KBA Hands On Workshops (HOWs) are a great way for all KBA members to learn about beekeeping. New beekeepers see first hand how to work with bees including handling, inspections, pest management and other management skills and techniques. HOWs offer something for everyone and ALL beekeepers are welcome and encouraged to attend. Experienced beekeepers might consider signing up to lead a HOW and sharing their knowledge and skills. HOWs are shared in the KBA calendar (last page of the newsletter), on the KBA website ([Kearsarge Beekeepers Association – Dedicated to promoting beekeeping and supporting local beekeepers \(wordpress.com\)](http://Kearsarge Beekeepers Association – Dedicated to promoting beekeeping and supporting local beekeepers (wordpress.com))), through email and the KBA Facebook page (KBA-NH). For more information or to take a HOW, reach out to Bam Fleury at randybeeman4@gmail.com. Hope to see you at the next HOW!

MAY

In the hive

Egg laying and brood rearing are in high gear, with the brood area expanding rapidly. The bees are foraging for pollen and nectar to support this colony growth. They are likely to be less defensive than in fall, with less to protect and lots to do!

With the growing population and possible overcrowding, mid-May is the beginning of swarm season. Queen cups are being built along the lower edges of brood frames. If the hive is crowded, some cups will likely be laid in. The drone population is growing.

The *Varroa* mite population is also building.

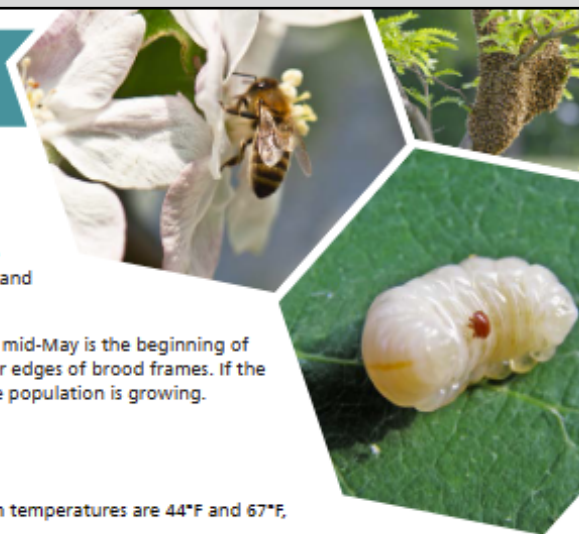
Seasonal conditions

In Ithaca, NY, in May, the average minimum and maximum temperatures are 44°F and 67°F, with 3" of precipitation. The last frost is in mid-May.

Dandelions, maples, deadnettle, wild strawberry, yellow rocket, oak, honey suckle, elderberry, elm trees, willow, and poplar trees are ongoing.

Fruits and fruit trees are blooming: wild and cultivated cherry, peach and plum trees (*Prunus* spp.), pear trees (*Pyrus* spp.), and apple and crabapple trees (*Malus* spp.), as well as blueberries (*Vaccinium* spp.), raspberries, and blackberries (*Rubus* spp.).

Other blooms include black locust (*Robinia pseudoacacia*), mustard (*Brassica* spp.), hawthorn (*Crataegus* spp.), tulip poplar (*Liriodendron tulipifera*), clovers (Dutch white: *Trifolium repens*, alsike: *Trifolium hybridum*, red: *Trifolium pratense*), and autumn olive (*Elaeagnus umbellata*).



May Highlights from the "Beekeeping Calendar for the Northeast"

A Resource from Cornell University

[Beekeeping Calendar for the Northeast.pdf](#) | [Powered by Box](#)

Read of more May beekeeping activities and other month's references in the Cornell University guide.

Beekeeping activities

Inspection

- Colony inspections should now take place every two weeks and include evaluating the brood pattern, confirming the presence of the queen and/or eggs, evaluating colony growth and available room, monitoring for pests and diseases, and other metrics. Recordkeeping is key to making these inspections useful and actionable.
- If you cannot inspect every one of your colonies, inspect those that are not showing as much activity on the outside.
- If the bottom hive body is empty, you might consider moving it above brood nest.
- If you install a package or nuc, allow two weeks for the colony to establish before you inspect it.

Nutrition

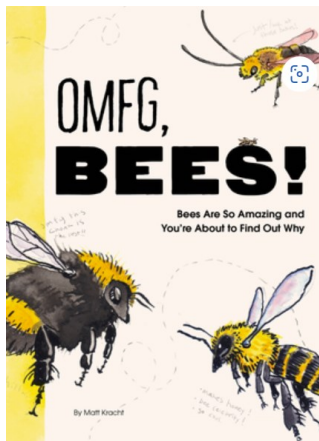
- The bees should be foraging for what they need, but they also need a lot at this time, so remain vigilant and prepared to feed sugar syrup or a pollen supplement if necessary.

- Provide supers if the brood chambers are full and the population/stores are growing with the first honey flows of spring.
- Feed package bees or nucs upon their arrival.

Pests, parasites, and diseases

- Monthly inspections should include monitoring for a range of pests and diseases: look for problems on the outside of the colony, in the brood, and on the adult bees themselves.
- Monitor *Varroa* mite levels. At this point in the year, if you find two or more mites (per 100 bees) from a sugar shake, ether roll, or alcohol wash, you will want to treat. Treatment methods will depend on your management goals, the condition of the colony, and external conditions. Drone comb can be an effective cultural method at this time of year. This may be a good time to break the brood cycle (and therefore the *Varroa* reproduction cycle) by caging the queen or making splits.

A fun look at bees at amazing bees...



[OMFG, BEES!: Bees Are So Amazing and You're About to Find Out Why \(Paperback\) | Gibson's Bookstore \(gibsonsbookstore.com\)](#)

Guess what: Bees are incredible. If you don't think so, you're wrong; but you're also in luck! Extreme bee enthusiast and bestselling author Matt Kracht is here to set the record straight with this helpful guidebook to all things bees.



Bam Fleury will have packages of bees available in early April and mid May, and Russian nucleus colonies mid to late April. Anyone interested should contact him at randybeeman4@gmail.com for more information.

KBA COMITTEES

Would you like to get involved with KBA?

KBA has standing Committees as well as occasional “pop-up” or ad-hoc Committees that are organized as needed. If you have an interest in participating on a particular committee, don't hesitate to reach out to the Chair. If you'd like to get involved, but are unsure where help is needed, feel free to reach out to any of the Officers listed on the back page of this newsletter or any of the Chairs listed here. We'd welcome the added interest and volunteers!

Apiary Committee

Randy (Bam) Fleury

KBA Bee School Committee *

John Chadwick

Speaker Committee

Susan Menard

Kim Pease

KBA Scholarship Committee

Kim Pease

Education/Outreach Committee

Kim Pease

Library Committee

Patrice Fredette

Nomination Committee

John Chadwick

Ad-hoc Committees

Summer Picnic Committee

Harvest Dinner Committee

* Looking for a Chairperson for these Committees.

2023 KBA MEMBERSHIPS AND DUES

KBA Memberships due January 1.

A special reminder for everyone to make sure to send their dues in to Robin Gray. Membership dues come with great benefits including: Access to Hands On Workshops (HOWs), KBA Newsletters (emailed and on website), Library, Mentors, and access to the KBA Facebook members only page, just to name a few!

More info and form can be found on the kbanh.org website.

If you are a current member and need to update your information (such as a new email address), please also submit a form to Robin.

Make checks payable to KBA or Kearsarge Beekeepers Association.

Mail to: Robin Gray, PO Box 275, Warner, NH 03278


Dues are: \$20 for individual, \$175 Individual lifetime, and \$250 Family lifetime



2023 KBA CALENDAR

Month/Date	Day	Time	Location	Topic	Mentor
April 29	Sat	10:00 AM	Apiary	HOWs: First full inspection	Bam Fleury
May	TBD	TBD		HOWs: Queen Rearing	
May 06	Sat		Apiary	HOWs: Hive growth/Swarming	
May 13	Sat	9:00 AM	Warner	KBA Monthly Meeting Warner Town Hall	
May 20	Sat		Apiary	HOWs: Making Splits	
May 27	Sat		Apiary	HOWs: Hive Inspections/Marking Queens	Shreve
June 03	Sat		Apiary	HOWs: Single Brood Management	Bam Fleury
June 10	Sat	9:00 AM	Apiary	Guest: Dave Priebe, State Inspector Note: There is no Business Meeting in June	
June 17	Sat		Apiary	HOWs: Dearth	Eric DeKing
June 24	Sat		Apiary	HOWs: Mite Washes/When to Treat? Option	
July 7	Sat		Apiary	HOWs: Solar Wax Melter / Inspection	Bill Goggin Bam Fleury
July 15 (tentative)	Sat	TBD	TBD	KBA Summer Picnic (July 16 rain date)	
Nov 10 (tentative)	Fri	TBD	TBD	KBA Harvest Dinner	
Nov 11 (tentative)	Sat	TBD	TBD	KBA Regular Meeting and Guest Speaker	

Additional events and HOWs may be added through the month. Check the KBA Facebook page for announcements and updates.
KBA Apiary: 223 North Road, Sunapee NH



*Many thanks to
Michael Todd for the generous donation of 10
frame equipment to KBA!*

KBA T-shirt Update!

The T-shirt order is in! They had to reorder one of the T-shirts, so printing has not started, but should be finished early next week. T-SHIRTS SHOULD BE READY FOR PURCHASE SOON, HOPEFULLY AT THE MAY MEETING. Buyers will be notified when they are ready. Stay tuned!

Kearsarge Beekeepers Association

President: Shreve Soule
 Vice President: Patrice Fredette
 Treasurer: Robin Gray
 Secretary: Diane Mancino
 Newsletter: Marilyn Milne

Please send information for newsletter to: kbanhclub@gmail.com
 Join our Facebook page at: KBA-NH (private group)

